

## Coupling Connection Pulse Valve - PL1030 Series (G3/4", G1", G1 1/2")

### GENERAL FEATURES

- The pulse valves are especially used for dust collector service application or similar systems.
- Compact design, high reliability, flow rate, quality and performance; long life.
- Extremely fast opening and closing
- Working Temperature: -20°C ... 80°C
- On request; with electronic timer
- Some application; dust filters, bunkers, dust extractors, electrostatic painting cabinets.
- Coils interchangeable
- Pulse valves must be used with filtered fluids.

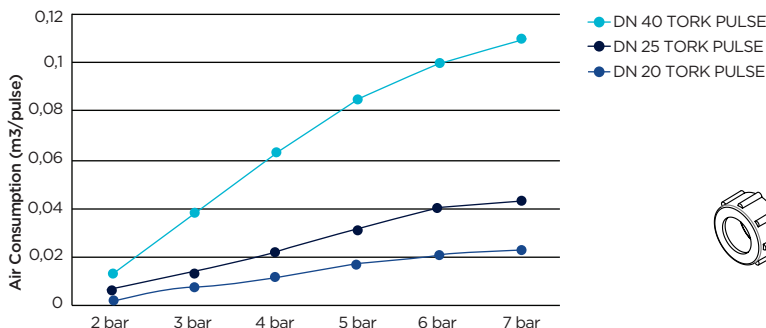
### ELECTRICAL CHARACTERISTICS

Continuous Duty	: ED %100
Coil Insulation Class	: H (180°C)
Coil Impregnation	: Polyester Fiber Glass
Ambient Temperature	: -20°C ... 80°C
Protection Degree	: IP65 (ISO 60529) (with coil duly fitted with the plug connector)
Electric Plug Connection	: DIN 46340 3- Poles Connector(DIN43650)
Connector Specification	: ISO 4400 / EN 175301-803 Form A, Spade Plug (Cable Ø6-8 mm)
Electrical Safety	: IEC 335
Standard Voltages	: AC 12 V, 24V, 48 V, 110V, 230 V DC 12 V, 24V, 48 V, 110V

On request other voltages  
 Voltages Tolerance : 3 % 10  
 Frequency : 50 / 60 Hz On request; LED connectors  
 Please, specify coil voltage with order.

### MATERIALS IN CONTACT WITH FLUIDS

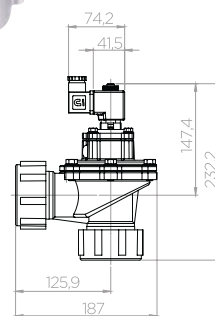
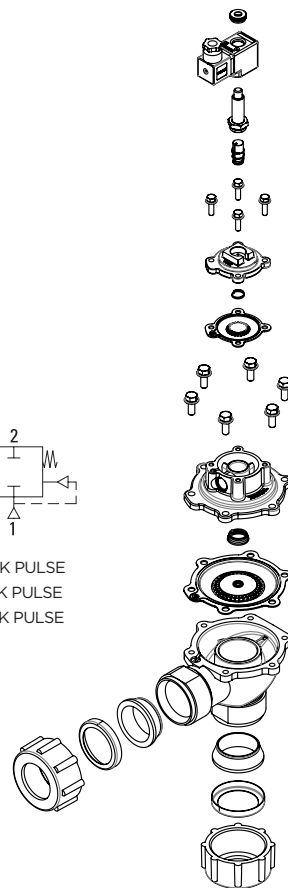
Body	: Aluminium
Internal Parts	: Stainless Steel and Brass
Sealing	: Thermoplastic
Shading Ring	: Copper
Seats	: Aluminium
Core, Tube	: Stainless Steel
Spring	: Stainless Steel



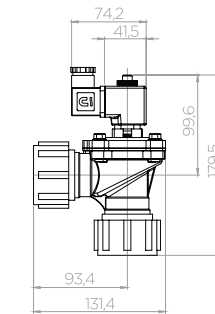
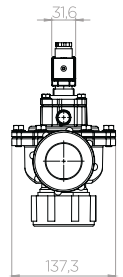
NORMALLY CLOSED

2/2 WAY

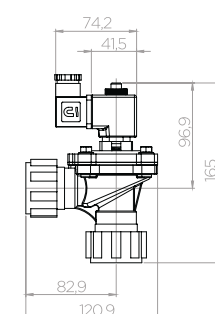
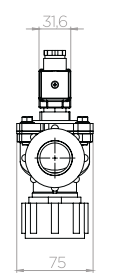
PILOT OPERATED



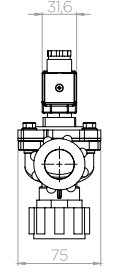
1 1/2" - 1 1/2"



1" - 1"



3/4" - 3/4"



Valve Order No	Connection Size	Orifice Size	Pressure		KV	Fluid Temperature		Seal	Weight
			min	max		min	max		
PL 1030	G	mm							
PL1030.04 - P	3/4" - 3/4"	20	0.5	8	150	-20	80	Thermoplastic	0.95
PL1030.05 - P	1" - 1"	25	0.5	8	270	-20	80	Thermoplastic	1.29
PL1030.07 - P	1 1/2" - 1 1/2"	44	0.5	8	774	-20	80	Thermoplastic	2.03